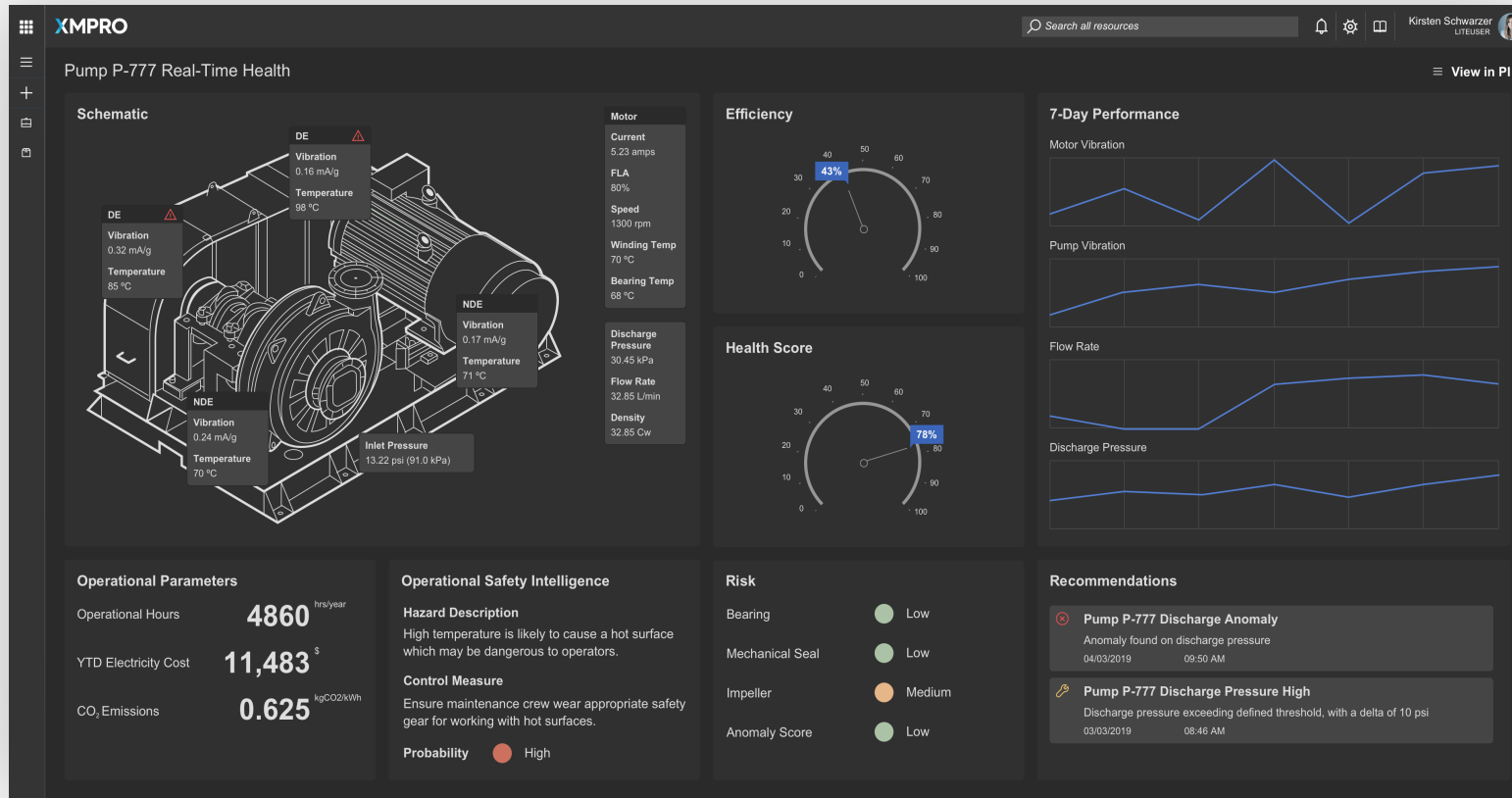


XMPRO

Event Intelligence Platform

For Real-Time Operations

Build Real-Time Applications Without Coding



To stay competitive and maximize opportunities in the new digital world, companies in asset-intensive industries need to respond to critical events in real-time.

XMPRO enables subject matter experts, like engineers, to build sophisticated apps in days.

Our no-code platform gives SME's the digital tools they need to solve challenges at scale with real-time applications.

What Can You Create With XMPRO?

Digital Twins

Build digital twins that use time-series data, analytical models, 3D models and engineering models to provide your team with real-time decision support.

Event Intelligence Applications

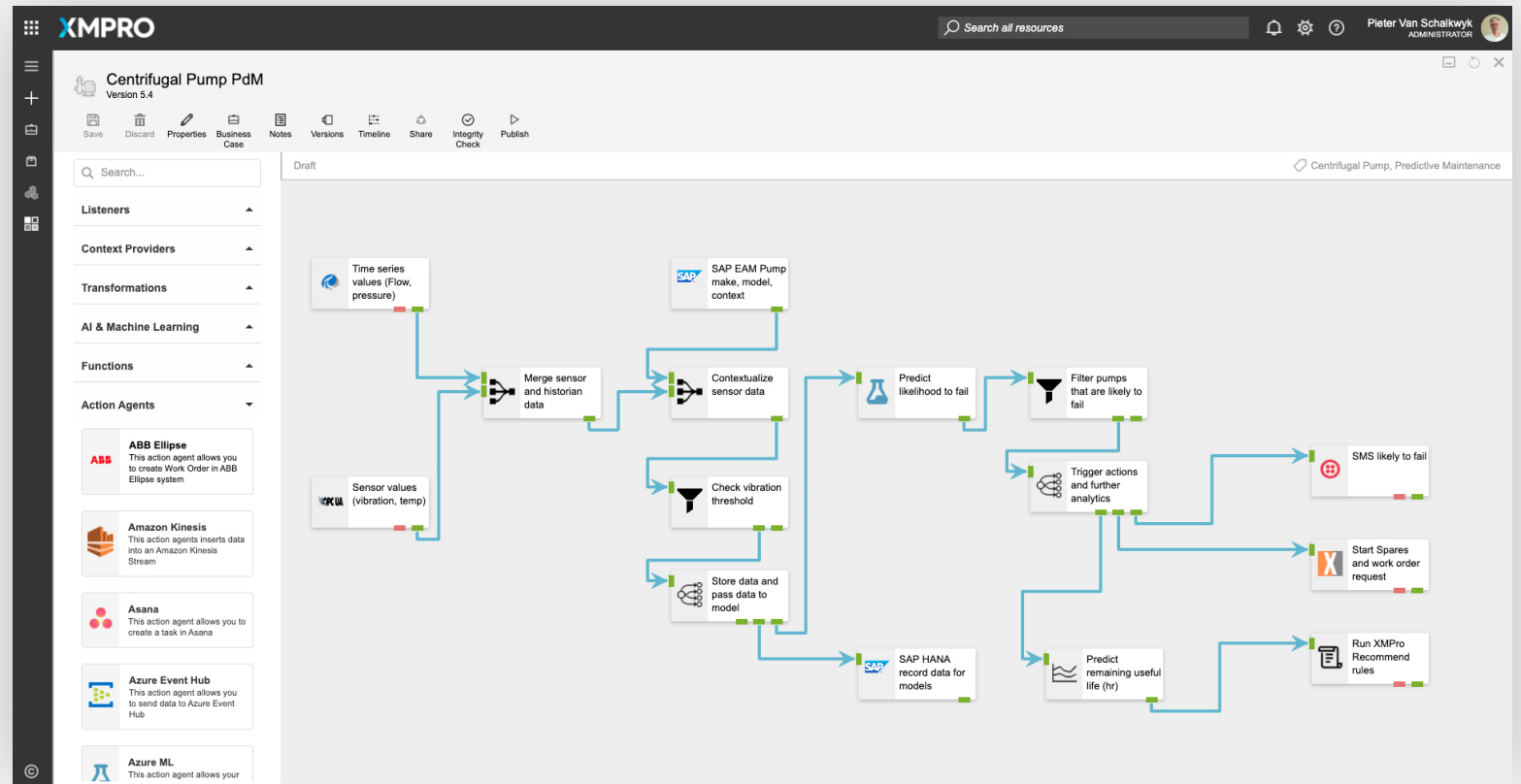
Event Intelligence apps identify critical events in your real-time data, apply analytics like predictive algorithms, and provide decision-makers with recommended actions. They also close the feedback loop and analyze the effectiveness of the response.

Digital Business Processes

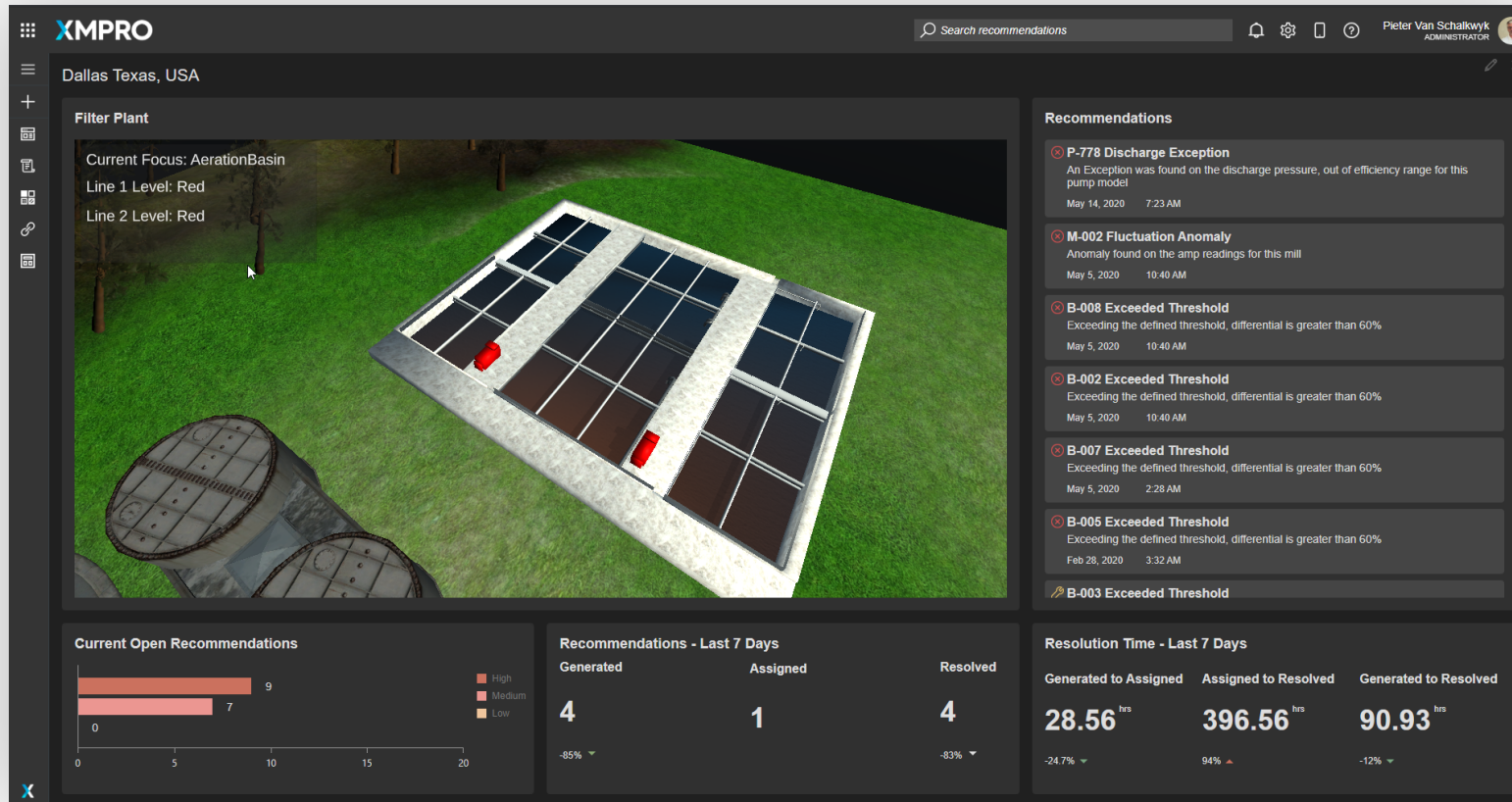
Rapidly create intelligent digital processes that enable new products and services, and leverage automation to improve profitability.

Detect Critical Events In Real-Time

- Integrate to heterogeneous business systems without disrupting your operations
- Visually design real-time data streams to orchestrate the flow of data
- Apply anomaly detection and machine learning to real-time data

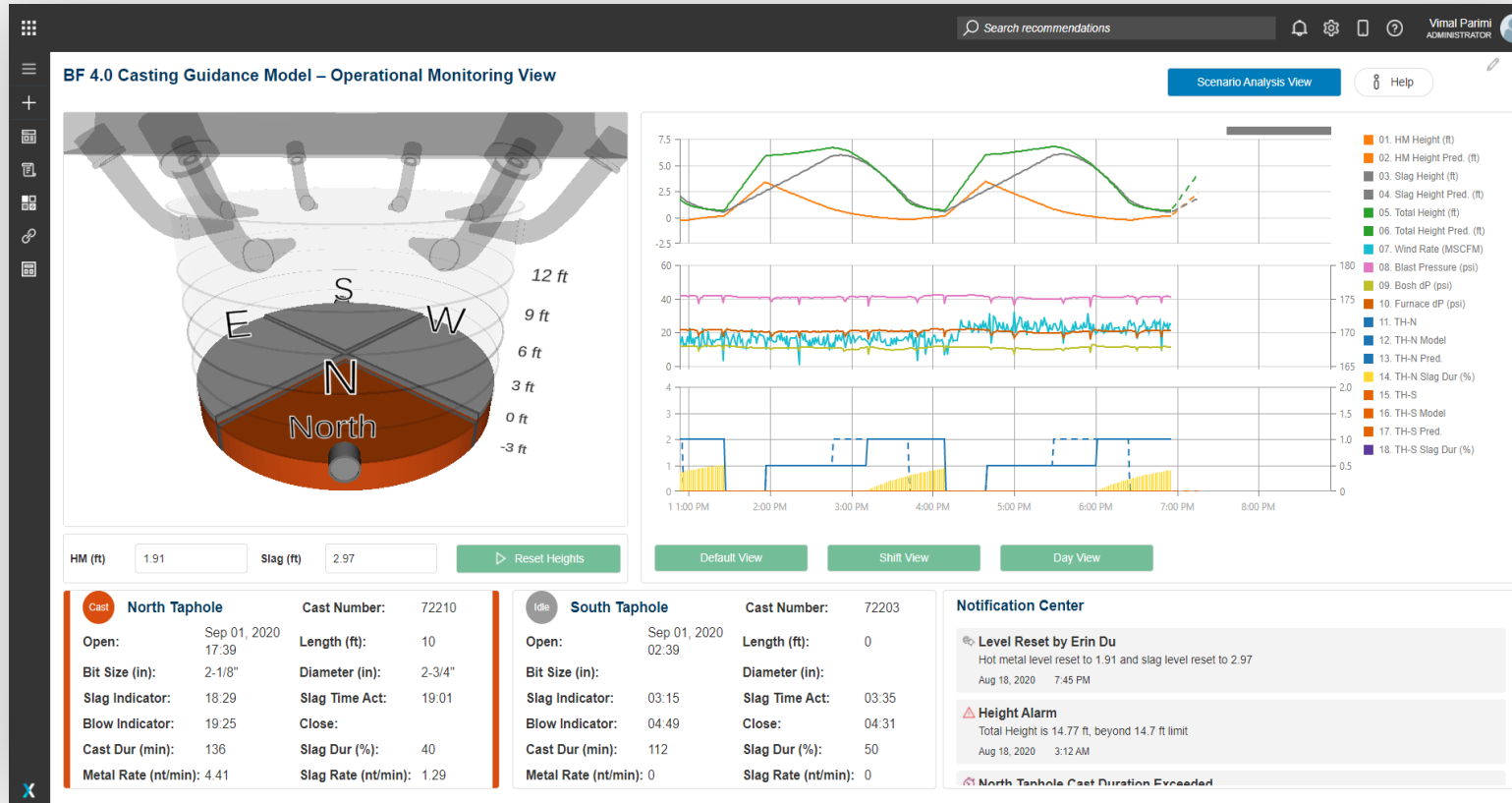


Provide Real-Time Decision Support



- Create real-time dashboards using a drag and drop designer
- Monitor where the bottlenecks are in your operations with live HMI views and interactive 3D visualizations
- Drill down into the data for a real-time view into asset or supply chain health

Empower Users with Real-Time Analytics



- Combine engineering or physics-based models with math and AI models in the same solution
- Use gamification engines such as Unity for enhanced decision guidance
- Apply analytics and simulation to operations and maintenance use case from the same data sources

Respond To Events Faster

- Initiate actions in your business systems based on real-time data
- Get rule-based recommendations that trigger when events occur
- Provide work instructions and resources on how to respond to the situation
- Send notifications and mobile recommendations to users in the field

P-778 Discharge Exception
My Apps > App Designer > My Recommendations > P-778 Discharge Exception

Recommendation Details
An Exception was found on the discharge pressure, out of efficiency range for this pump model

Event Data

Power	240
PowerSavings	42.307692307692314
PowerTarget	407.68
Feedrate	66.5394287109375
Pressure	35.778

Comments

Looks like the same issue we had 3 weeks ago. Please check the suction strainer, it is a new type that is being tested

Recommendation History

Date Generated	Date Resolved	Resolved by
Mar 17, 2020, 4:40 AM	Mar 17, 2020, 4:40 AM	Pieter Van Schalkwyk

Additional Information

Work Order Number
W76-987

Work Request Number

Work Instructions
Possible problems causing a discharge pressure drop:

Blocked Suction Pipe
A partial obstruction can be caused by a piece of foreign material being drawn across the bottom of the suction pipe during the operation of the pump. Such an obstruction may not be sufficient to stop operation completely, but will result in a reduced output from the pump. It will also cause a drop in discharge pressure and amps, and will increase the vacuum reading on the pump suction. Rough running and vibration of the pump may also occur due to cavitation within the pump.

Blocked Impeller
Impellers are capable of passing a certain size particle. If a particle larger in size enters the suction pipe, it may become lodged in the eye of the impeller, restricting the output of the pump. Such an obstruction will usually result in a drop of amperes and a drop in both discharge pressure and suction vacuum readings. The out-of-balance effects resulting from this condition may cause pump vibration.

SHUTTING DOWN PROCEDURE
Before you shut down the pump, it should be allowed to operate for a short period on only clean water to clear the system.

Then proceed as follows:


1. Depress the "STOP PUMP" push-button on the control panel.
2. Gland seal water (if any) must be left on during all subsequent operations, namely: start-up, running, shutdown, runback and system drain. Gland water may only then be turned off.

Resources
[Warman Test Procedure](#)

Did this recommendation solve the problem?

Save Mark as Resolved

Scale Your Digital Transformation Initiatives



Transfer Request
Rule Setup

Duplicate Save Delete

Rule Name
Transfer Request

Notification Headline (max 20 characters)
Use the @ symbol to choose tags from your data stream.
Transfer Request - Sales Doc @SalesID

Notification Description (max 60 characters)
Use the @ symbol to choose tags from your data stream.
Transfer @Shortage units from nearby plants to enable fulfillment

Icon

Order Quantity
Inventory
Other Plant Distance
Other Plant Inventory
SalesID
Shortage

Rule Logic

Or +

Order Quantity Is greater than Inventory

And +

Other Plant Distance Is less than 100 km

Other Plant Inventory Is greater than 0

Recommendations

Cost Saving Reduce Stock Customer Exp Efficiency Gain

Reduce SKU #38734 EOQ \$28.4 k
Review economic order quantity - reduce by +20%
04/03/2019 09:50 AM

7 day avg On-time Delivery below threshold \$45.3 k
Update demand & anticipation algorithm
04/03/2019 09:50 AM

Transfer Request - Sales Doc #16325
Transfer 5 units from nearby plants to enable fulfillment
03/28/2019 09:50 AM

STIP - Transfer SKU #85462 Warehouse \$10.4 k
Transfer +300 units from Wh45 to Depot 93
03/26/2019 09:50 AM

- Subject matter experts can build event-driven applications without having to code
- Your IT department can deploy new integrations within days using the XMPro Connector Framework
- Your most experienced team members can set up rule-based recommendations to capture and codify their knowledge

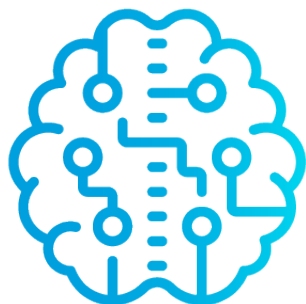
Why Choose XMPRO?

User-friendly, low cost, simple to use and easy to customize for and by operators



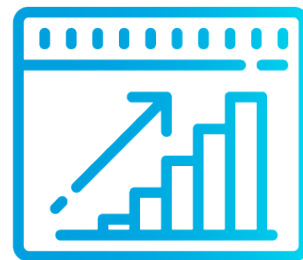
Robust Integration

We integrate to existing, diverse OT/ IT ecosystems without disrupting operations



Easy To Start

Start with simple prototypes that drive value and mature into advanced AI/ ML



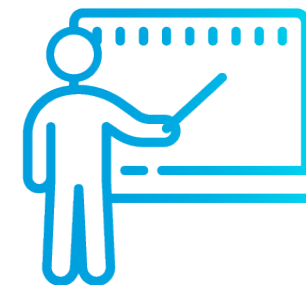
Fast Time To Value

XMPRO creates a direct link to business KPIs and fast time to show/visualize value



Codify Knowledge

Use SME expertise as further input for AI and machine learning



Empower SMEs

Proven skills transfer process that enables SMEs to be self-sufficient on XMPRO

Learn More

About Us



[Read our story](#)

Platform Overview



[Explore the platform](#)

Demo Video



[Watch the demo](#)



[XMPRO.COM](https://xmproweb.com)